

REV	LOCATIONS	DESCRIPTION	DATE	REVISER	APPD
1	△	Size change	18/MAY/20	KATE	CHERRY
2	△	Update dimensions and tolerances	19/AUG/25	MATT	LEO

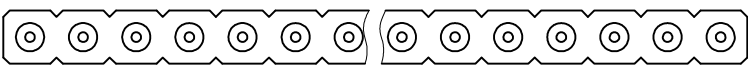
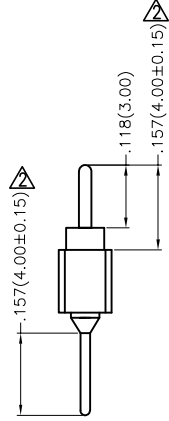
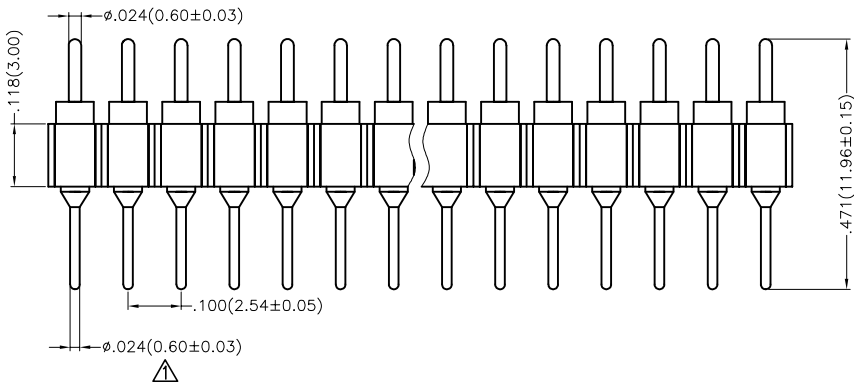
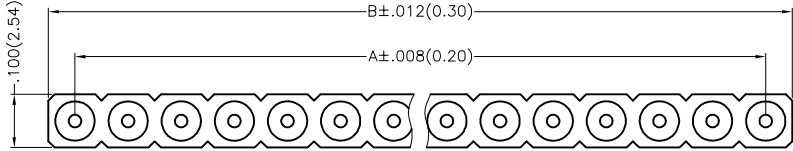
SPECIFICATIONS

Electrical

Current Rating: 3A AC(rms)/DC
Voltage Rating: 60V AC(rms)/DC
Contact Resistance: 20 mΩ Max
Insulation Resistance: 1000 MΩ Min
Withstanding Voltage: 100V AC r.m.s
Temperature Range—Operating:
Gold Plated: -55°C~+105°C
Tin Plated: -40°C~+105°C

Material

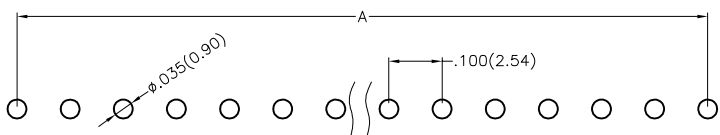
Housing: PPS (UL 94V-0), Color: Black
Machined pin (Outer sleeve): Brass
Plating: Gold plated/ Selective gold plated on contact area and 120μ" Min. bright tin plated on tails area



Ordering Information

FSI 254 04 — M S XX S X XX 8 B
1 2 3 4 5 6 7 8 9 10 11

1	Category FSI-SIP Socket	2	Series Number 254-Pitch2.54mm	3	Distinction No. 04	4	Type M-Male	5	Row Option S-Single Row	6	Circuits XX
7	Entry Angle S-180° Vertical	8	Plating 1-Gold plated 3-Selective gold plated on contact area and bright tin plated on tails area	9	Thickness of Plating 00-Gold Flash 01-1μ" Custom plate available	10	Material-Resin 8-PPS	11	Packaging B-PE Bag		





Recommended P.C.Board Layout
Tolerances: ±.002(0.05)

 THIRD ANGLE PROJECTION	GENERAL TOLERANCES (UNLESS SPECIFIED)		APPROVE BY FRANK	DATE 01/AUG/17	PART NO. FSI25404-MSXXSXXX8B	ITEM NO. FSI25404	 Building Technology Cornerstone	
	X.±.012(0.30)	X.±5°	CHECKED BY CHERRY	DATE 01/AUG/17	TITLE Board to Board(SIP Socket) Pitch 2.54mm 180° Vertical			REV 2
DESIGN UNITS Inch (metric)	X.X±.008(0.20)	.X'±2°	DRAWN BY LXF	DATE 01/AUG/17	THIS DRAWING CONTAINS INFORMATION THAT IS PROPRIETARY TO TXGA INDUSTRIAL ELECTRONICS(S.Z)CO.,LTD AND SHOULD NOT BE USED WITHOUT WRITTEN PERMISSION			
SCALE 5:1	SIZE A4	X.XX±.006(0.15)						
		X.XXX±.004(0.10)						

REV	LOCATIONS	DESCRIPTION	DATE	REVISER	APPD

Circuits (n)	Part No.	Dimensions(in/mm)		Circuits (n)	Part No.	Dimensions(in/mm)	
		A	B			A	B
2	FSI25404-MS02SXXX8B	.100(2.54)	.200(5.08)	22	FSI25404-MS22SXXX8B	2.100(53.34)	2.200(55.88)
3	FSI25404-MS03SXXX8B	.200(5.08)	.300(7.62)	23	FSI25404-MS23SXXX8B	2.200(55.88)	2.300(58.42)
4	FSI25404-MS04SXXX8B	.300(7.62)	.400(10.16)	24	FSI25404-MS24SXXX8B	2.300(58.42)	2.400(60.96)
5	FSI25404-MS05SXXX8B	.400(10.16)	.500(12.70)	25	FSI25404-MS25SXXX8B	2.400(60.96)	2.500(63.50)
6	FSI25404-MS06SXXX8B	.500(12.70)	.600(15.24)	26	FSI25404-MS26SXXX8B	2.500(63.50)	2.600(66.04)
7	FSI25404-MS07SXXX8B	.600(15.24)	.700(17.78)	27	FSI25404-MS27SXXX8B	2.600(66.04)	2.700(68.58)
8	FSI25404-MS08SXXX8B	.700(17.78)	.800(20.32)	28	FSI25404-MS28SXXX8B	2.700(68.58)	2.800(71.12)
9	FSI25404-MS09SXXX8B	.800(20.32)	.900(22.86)	29	FSI25404-MS29SXXX8B	2.800(71.12)	2.900(73.66)
10	FSI25404-MS10SXXX8B	.900(22.86)	1.000(25.40)	30	FSI25404-MS30SXXX8B	2.900(73.66)	3.000(76.20)
11	FSI25404-MS11SXXX8B	1.000(25.40)	1.100(27.94)	31	FSI25404-MS31SXXX8B	3.000(76.20)	3.100(78.74)
12	FSI25404-MS12SXXX8B	1.100(27.94)	1.200(30.48)	32	FSI25404-MS32SXXX8B	3.100(78.74)	3.200(81.28)
13	FSI25404-MS13SXXX8B	1.200(30.48)	1.300(33.02)	33	FSI25404-MS33SXXX8B	3.200(81.28)	3.300(83.82)
14	FSI25404-MS14SXXX8B	1.300(33.02)	1.400(35.56)	34	FSI25404-MS34SXXX8B	3.300(83.82)	3.400(86.36)
15	FSI25404-MS15SXXX8B	1.400(35.56)	1.500(38.10)	35	FSI25404-MS35SXXX8B	3.400(86.36)	3.500(88.90)
16	FSI25404-MS16SXXX8B	1.500(38.10)	1.600(40.64)	36	FSI25404-MS36SXXX8B	3.500(88.90)	3.600(91.44)
17	FSI25404-MS17SXXX8B	1.600(40.64)	1.700(43.18)	37	FSI25404-MS37SXXX8B	3.600(91.44)	3.700(93.98)
18	FSI25404-MS18SXXX8B	1.700(43.18)	1.800(45.72)	38	FSI25404-MS38SXXX8B	3.700(93.98)	3.800(96.52)
19	FSI25404-MS19SXXX8B	1.800(45.72)	1.900(48.26)	39	FSI25404-MS39SXXX8B	3.800(96.52)	3.900(99.06)
20	FSI25404-MS20SXXX8B	1.900(48.26)	2.000(50.80)	40	FSI25404-MS40SXXX8B	3.900(99.06)	4.000(101.60)
21	FSI25404-MS21SXXX8B	2.000(50.80)	2.100(53.34)				

 THIRD ANGLE PROJECTION	GENERAL TOLERANCES (UNLESS SPECIFIED)		APPROVE BY FRANK	DATE 01/AUG/17	PART NO. FSI25404-MSXXSXXX8B	ITEM NO. FSI25404	 Building Technology Cornerstone		
	X.±.012(0.30)	X.±5'	CHECKED BY CHERRY	DATE 01/AUG/17	TITLE Board to Board(SIP Socket) Pitch 2.54mm 180° Vertical			REV 2	SHEET NO. 2/2
	X.X±.008(0.20)	.X'±2"	DRAWN BY LXF	DATE 01/AUG/17	THIS DRAWING CONTAINS INFORMATION THAT IS PROPRIETARY TO TXGA INDUSTRIAL ELECTRONICS(S.Z)CO.,LTD AND SHOULD NOT BE USED WITHOUT WRITTEN PERMISSION				
	X.XX±.006(0.15)	.XX'±1"							
SCALE 5:1	SIZE A4	X.XXX±.004(0.10)	.XXX'±0.5'						

REV	LOCATIONS	DESCRIPTION	DATE	REVISER	APPD
1	▲	Size change	18/MAY/20	KATE	CHERRY
2	▲	Update dimensions and tolerances	19/AUG/25	MATT	LEO

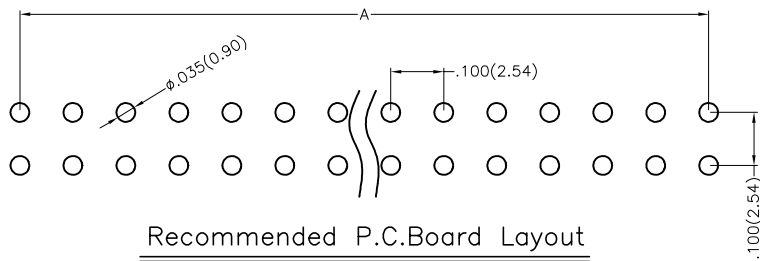
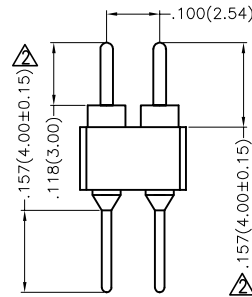
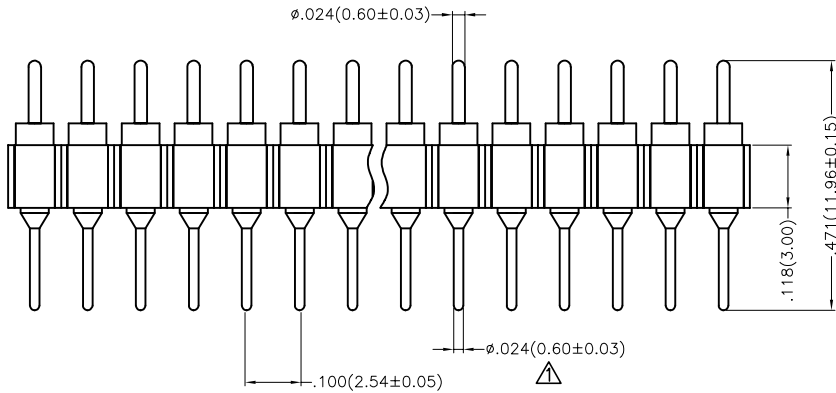
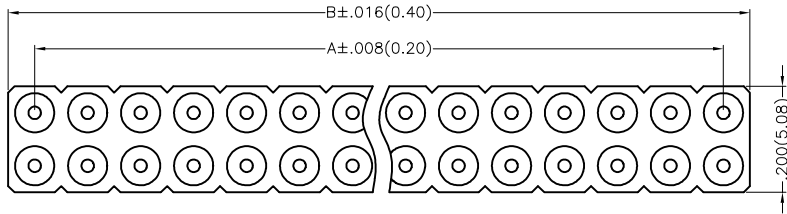
SPECIFICATIONS

Electrical

Current Rating: 3A AC(rms)/DC
Voltage Rating: 60V AC(rms)/DC
Contact Resistance: 20 mΩ Max
Insulation Resistance: 1000 MΩ Min
Withstanding Voltage: 100V AC r.m.s
Temperature Range—Operating:
Gold Plated: -55°C~+105°C
Tin Plated: -40°C~+105°C

Material

Housing: PPS (UL 94V-0), Color: Black
Machined pin (Outer sleeve): Brass
Plating: Gold plated/ Selective gold plated on contact area and 120μ" Min. bright tin plated on tails area



Recommended P.C.Board Layout
Tolerances: ±.002(0.05)

Ordering Information

FSI 254 04 — M D XX S X XX 8 B
1 2 3 4 5 6 7 8 9 10 11



1 Category FSI-SIP Socket	2 Series Number 254-Pitch2.54mm	3 Distinction No. 04	4 Type M-Male	5 Row Option D-Double Row	6 Circuits XX
7 Entry Angle S-180° Vertical	8 Plating 1-Gold plated 3-Selective gold plated on contact area and bright tin plated on tails area	9 Thickness of Plating 00-Gold Flash 01-1μ" Custom plate available	10 Material-Resin 8-PPS	11 Packaging B-PE Bag	

 THIRD ANGLE PROJECTION	GENERAL TOLERANCES (UNLESS SPECIFIED)		APPROVE BY FRANK	DATE 01/AUG/17	PART NO. FSI25404-MDXXSXXX8B	ITEM NO. FSI25404	 Building Technology Cornerstone
	X.±.012(0.30)	X.±5'	CHECKED BY CHERRY	DATE 01/AUG/17	TITLE Board to Board(SIP Socket) Pitch 2.54mm 180° Vertical		
DESIGN UNITS Inch (metric)	X.X±.008(0.20)	.X'±2'	DRAWN BY LXF	DATE 01/AUG/17	THIS DRAWING CONTAINS INFORMATION THAT IS PROPRIETARY TO TXGA INDUSTRIAL ELECTRONICS(S.Z)CO.,LTD AND SHOULD NOT BE USED WITHOUT WRITTEN PERMISSION		
SCALE 5:1	SIZE A4	X.XX±.006(0.15)					
		X.XXX±.004(0.10)					

1 2 3 4 5 6 7 8

REV	LOCATIONS	DESCRIPTION	DATE	REVISER	APPD

Circuits (n)	Part No.	Dimensions(in/mm)		Circuits (n)	Part No.	Dimensions(in/mm)	
		A	B			A	B
4	FSI25404-MD04SXXX8B	.100(2.54)	.200(5.08)	44	FSI25404-MD44SXXX8B	2.100(53.34)	2.200(55.88)
6	FSI25404-MD06SXXX8B	.200(5.08)	.300(7.62)	46	FSI25404-MD46SXXX8B	2.200(55.88)	2.300(58.42)
8	FSI25404-MD08SXXX8B	.300(7.62)	.400(10.16)	48	FSI25404-MD48SXXX8B	2.300(58.42)	2.400(60.96)
10	FSI25404-MD10SXXX8B	.400(10.16)	.500(12.70)	50	FSI25404-MD50SXXX8B	2.400(60.96)	2.500(63.50)
12	FSI25404-MD12SXXX8B	.500(12.70)	.600(15.24)	52	FSI25404-MD52SXXX8B	2.500(63.50)	2.600(66.04)
14	FSI25404-MD14SXXX8B	.600(15.24)	.700(17.78)	54	FSI25404-MD54SXXX8B	2.600(66.04)	2.700(68.58)
16	FSI25404-MD16SXXX8B	.700(17.78)	.800(20.32)	56	FSI25404-MD56SXXX8B	2.700(68.58)	2.800(71.12)
18	FSI25404-MD18SXXX8B	.800(20.32)	.900(22.86)	58	FSI25404-MD58SXXX8B	2.800(71.12)	2.900(73.66)
20	FSI25404-MD20SXXX8B	.900(22.86)	1.000(25.40)	60	FSI25404-MD60SXXX8B	2.900(73.66)	3.000(76.20)
22	FSI25404-MD22SXXX8B	1.000(25.40)	1.100(27.94)	62	FSI25404-MD62SXXX8B	3.000(76.20)	3.100(78.74)
24	FSI25404-MD24SXXX8B	1.100(27.94)	1.200(30.48)	64	FSI25404-MD64SXXX8B	3.100(78.74)	3.200(81.28)
26	FSI25404-MD26SXXX8B	1.200(30.48)	1.300(33.02)	66	FSI25404-MD66SXXX8B	3.200(81.28)	3.300(83.82)
28	FSI25404-MD28SXXX8B	1.300(33.02)	1.400(35.56)	68	FSI25404-MD68SXXX8B	3.300(83.82)	3.400(86.36)
30	FSI25404-MD30SXXX8B	1.400(35.56)	1.500(38.10)	70	FSI25404-MD70SXXX8B	3.400(86.36)	3.500(88.90)
32	FSI25404-MD32SXXX8B	1.500(38.10)	1.600(40.64)	72	FSI25404-MD72SXXX8B	3.500(88.90)	3.600(91.44)
34	FSI25404-MD34SXXX8B	1.600(40.64)	1.700(43.18)	74	FSI25404-MD74SXXX8B	3.600(91.44)	3.700(93.98)
36	FSI25404-MD36SXXX8B	1.700(43.18)	1.800(45.72)	76	FSI25404-MD76SXXX8B	3.700(93.98)	3.800(96.52)
38	FSI25404-MD38SXXX8B	1.800(45.72)	1.900(48.26)	78	FSI25404-MD78SXXX8B	3.800(96.52)	3.900(99.06)
40	FSI25404-MD40SXXX8B	1.900(48.26)	2.000(50.80)	80	FSI25404-MD80SXXX8B	3.900(99.06)	4.000(101.60)
42	FSI25404-MD42SXXX8B	2.000(50.80)	2.100(53.34)				

 THIRD ANGLE PROJECTION	GENERAL TOLERANCES (UNLESS SPECIFIED)		APPROVE BY FRANK	DATE 01/AUG/17	PART NO. FSI25404-MDXXSXXX8B	ITEM NO. FSI25404	 Building Technology Cornerstone
	DESIGN UNITS Inch (metric)	X.±.012(0.30) X.X±.008(0.20) X.XX±.006(0.15) X.XXX±.004(0.10)	X.±5" .X±2" .XX±1" .XXX±0.5"	CHECKED BY CHERRY	DATE 01/AUG/17	TITLE Board to Board(SIP Socket) Pitch 2.54mm 180° Vertical	
SCALE 5:1	SIZE A4	DRAWN BY LXF		DATE 01/AUG/17	THIS DRAWING CONTAINS INFORMATION THAT IS PROPRIETARY TO TXGA INDUSTRIAL ELECTRONICS(S.Z)CO.,LTD AND SHOULD NOT BE USED WITHOUT WRITTEN PERMISSION		REV 2 SHEET NO. 2/2

1 2 3 4 5 6 7 8